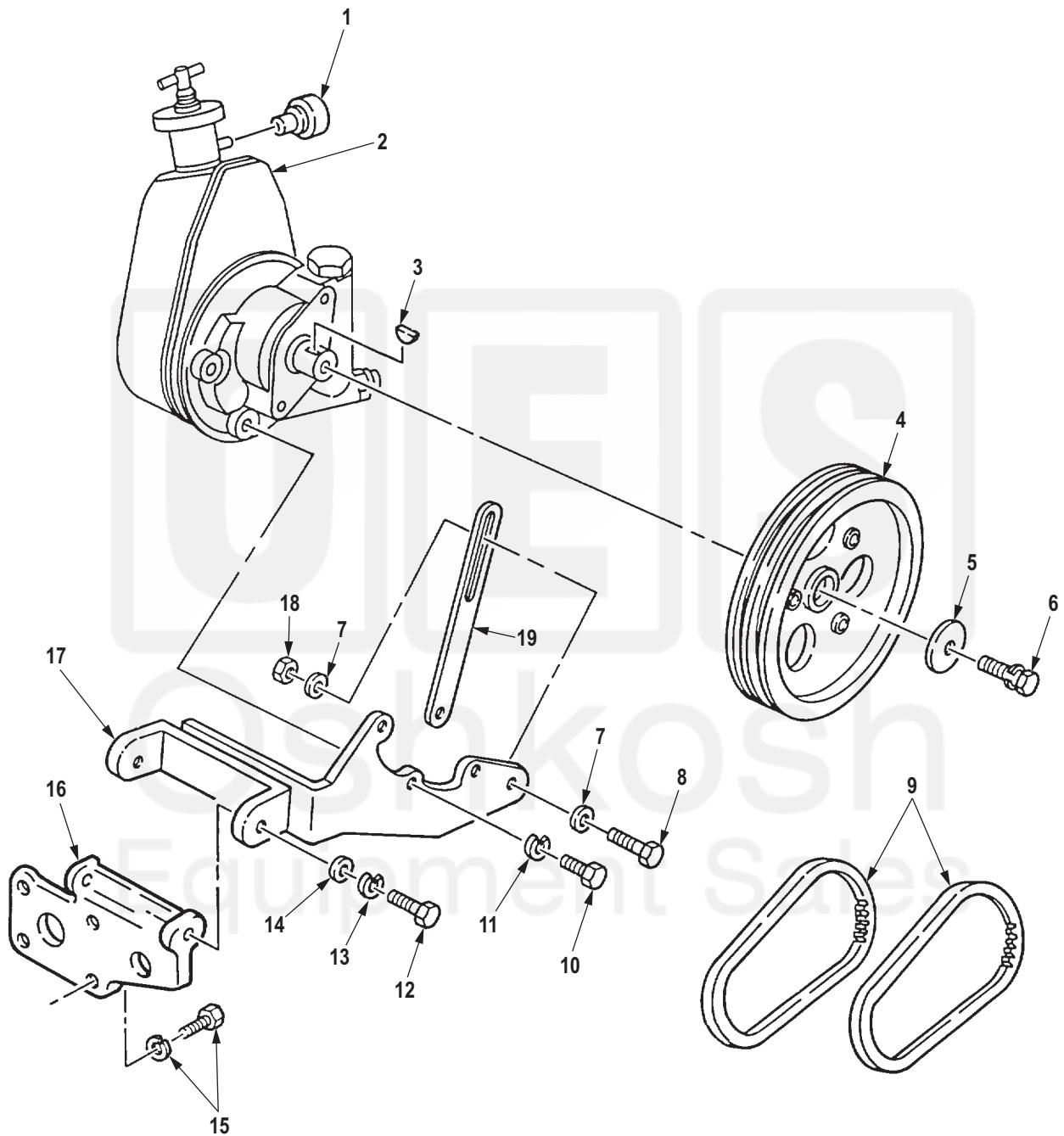


2
3



R0349DAA

Figure 332. Power Steering Pump Assembly, Pulley Assembly, Mounting Hardware, and Belts.

0333-2

(1) ITEM NO.	(2) SMR CODE	(3) NSN	(4) CAGEC	(5) PART NUMBER	(6) DESCRIPTION AND USABLE ON CODE (UOC)	(7) QTY
GROUP 1410 HYDRAULIC PUMP OR FLUID MOTOR ASSEMBLY.						
FIG. 332. POWER STEERING PUMP ASSEMBLY, PULLEY ASSEMBLY, MOUNTING HARDWARE, AND BELTS.						
1	PAFZZ	4310-01-094-0791	90005	569020-02	BREATHER UOC: DAC,DAD,DAE,DAF,DAG,DA H,DAJ,DAL,DAW,DAX,V14,V15,V16, V17,V18,V19,V20,V21,V22,V24	1
2	PAFHH	2530-01-112-2161	19954	ER15996-1	PUMP ASSEMBLY,POWER UOC: DAC,DAD,DAE,DAF,DAG,DA H,DAJ,DAL,DAW,DAX,V14,V15,V16, V17,V18,V19,V20,V21,V22,V24	1
3	PAFZZ	5315-00-616-5514	80205	MS35756-6	. KEY,WOODRUFF UOC: DAC,DAD,DAE,DAF,DAG,DA H,DAJ,DAL,DAW,DAX,V14,V15,V16, V17,V18,V19,V20,V21,V22,V24	1
4	PAFZZ	3020-00-134-7946	19207	11664244	PULLEY,GROOVE UOC: DAC,DAD,DAE,DAF,DAG,DA H,DAJ,DAL,DAW,DAX,V14,V15,V16, V17,V18,V19,V20,V21,V22,V24	1
5	PAFZZ	5310-00-231-0280	19207	11664241	WASHER,FLAT UOC: DAC,DAD,DAE,DAF,DAG,DA H,DAJ,DAL,DAW,DAX,V14,V15,V16, V17,V18,V19,V20,V21,V22,V24	1
6	PAFZZ	5306-00-238-5661	19207	11664243	BOLT,ASSEMBLED WASH UOC: DAC,DAD,DAE,DAF,DAG,DA H,DAJ,DAL,DAW,DAX,V14,V15,V16, V17,V18,V19,V20,V21,V22,V24	1
7	PAFZZ	5310-00-080-6004	96906	MS27183-14	WASHER,FLAT UOC: DAC,DAD,DAE,DAF,DAG,DA H,DAJ,DAL,DAW,DAX,V14,V15,V16, V17,V18,V19,V20,V21,V22,V24	2
8	PAFZZ	5305-00-269-3239	80204	B1821BH038F138N	SCREW,CAP,HEXAGON H UOC: DAC,DAD,DAE,DAF,DAG,DA H,DAJ,DAL,DAW,DAX,V14,V15,V16, V17,V18,V19,V20,V21,V22,V24	1
9	PAFZZ	3030-00-832-4312	96906	MS51066-48-2	BELTS,V,MATCHED SET UOC: DAC,DAD,DAE,DAF,DAG,DA H,DAJ,DAL,DAW,DAX,V14,V15,V16, V17,V18,V19,V20,V21,V22,V24	1
10	PAFZZ	5305-00-725-2317	80204	B1821BH038C150N	SCREW,CAP,HEXAGON H UOC: DAC,DAD,DAE,DAF,DAG,DA H,DAJ,DAL,DAW,DAX,V14,V15,V16, V17,V18,V19,V20,V21,V22,V24	3